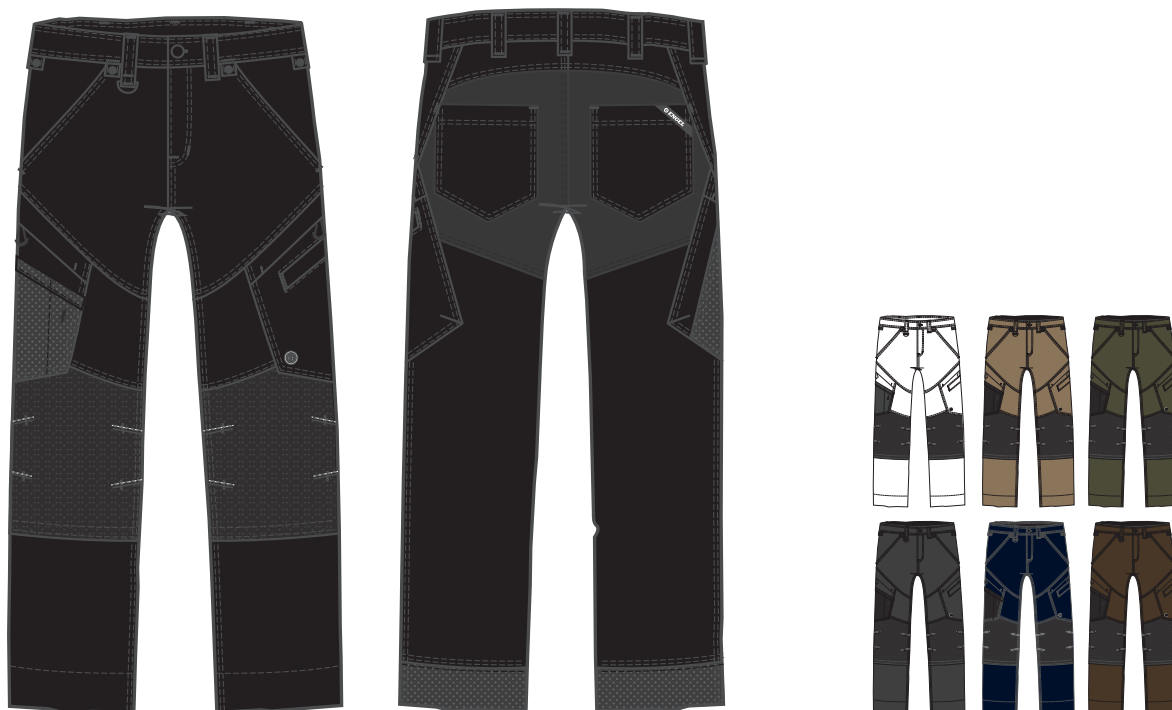


X-TREME WORK TROUSERS WITH 4-WAY STRETCH



2366-317

X-treme work trousers with 4-way stretch

Size	EN 42-66 / 22-28
	UK 28,5-47 / S31,5-S41
Quality	73% nylon/17% cotton/10% elastane, 195 g/m ²
Colours	3 White - 20 Black - 41 Toffee Brown - 53 Forest Green - 79 Anthracite Grey
	165 Blue Ink - 167 Mocca Brown
Wash	

DEKO-TEK®
STANDARD 100
by OEKO-TEX®

FE-SUPER
STRETCH

EXTRA LEG
LENGTH

TOOL POCKETS



Functional work trousers with a modern fit and many practical details. Optimal fit with ergonomically shaped and reinforced knees. The fabric is a comfortable, hard-wearing 4-way stretch with top breathability. The fabric will absorb light perspiration and dry up quickly for extra-high comfort. Buttons for easy attachment of hanging tool pockets. D-ring on the front for attaching e.g. an ID-card. Two spacious front cross-pockets. Two back pockets. Two zip-up thigh pockets. The left thigh pocket has an extra phone pocket. The right thigh pocket has an attached folding rule pocket with extra sections, reinforced knee/knee pocket with Velcro closure at the bottom, as well as two options for height adjustment of the knee cushion. The reinforced knee is made from extra hard-wearing kevlar. The bottom of the trouser legs are reinforced for extra strength. The trousers have an extra deep hem so the length of the trousers can be increased if required. A single seam is extended to provide extra leg length, while the seam stays sealed.

FE ENGEL