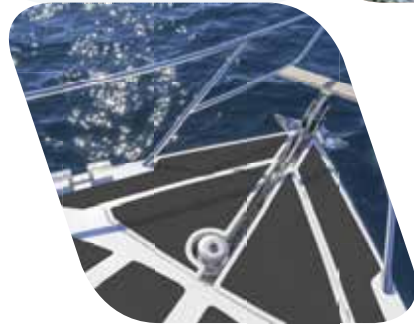




MEHLHOSE®
TRACTION TECHNOLOGIES





public safety

We prevent
slipping and
tripping accidents!



site safety

2



vehicle safety

Contents

Customising

Individually printed for you	3
Individually cut for you	4

m2 Anti-Slip Tape, self-adhesive

m2 Anti-Slip Tape Overview	5
General Purpose	6
Signal Colours, Hazard Warning Tapes	7
Multifunctional Tapes, Floor Signs	8
Floor Markings	9
Glow in Dark	10/15
Daylight Fluorescent	11/14
GlitterGrip, Public 46	12
Conformable, Coarse Grade, Coarse Conformable	13
Easy Clean R10	14/15

Anti-Slip Profiles

Anti-Slip Plates Aluminium	16
Anti-Slip Edge Profiles Aluminium	16
Anti-Slip Stair Edge Profiles Aluminium	17
Anti-Slip Plates GRP	18
Anti-Slip Edge Profiles GRP	18
Anti-Slip Stair Edge Profiles GRP	19

Mats

m2 Anti-Slip Mat	20
m2 Anti-Fatigue Mats	20
m2 Easy Lock and Tough	21

Floor Marking Tapes

Floor Marking Tape Standard	22
Floor Marking Tape Laminated	22
Floor Marking Tape Safety	23

Floor Repairs

dmd Concrete Repair Set	24
dmd Asphalt Repair Set	24
dmd Concrete Surface Repair Set	25
dmd Concrete Patch Repair Set	25

Floor Coatings

dmd Epoxy Floor Coatings	26
dmd Anti-Slip Epoxy Floor Coatings	26
dmd Exterior Anti-Slip Floor Coat	27

Anti-Slip Shoes

Grip Anti-Slip Footwear	28-31
-------------------------	-------



Individually printed for you

Need our anti-slip products with long-lasting UV-printing? Please ask, it's no problem. We create your customised anti-slip product.

3



NEW

Printed on GRP



Printed on General Purpose



Printed on **m2** Easy Lock and Tough

Printed on Coarse Conformable



Printed on Easy Clean R10

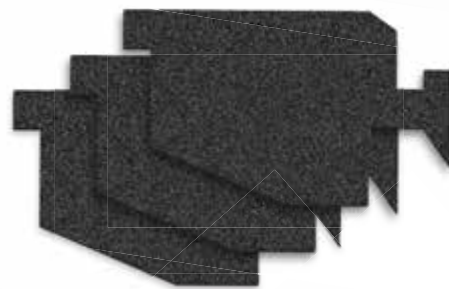


Printed on Coarse Grade



4 Individually cut for you

Need our anti-slip products customising? Please ask, it's no problem.
We create your customised anti-slip product.



m2 Anti-Slip Tape

SELF-ADHESIVE



Description:

- Aluminium-Oxide Grit anti-slip surface (no grit on Easy Clean R10 grades)
- Range of grit sizes available (providing different levels of traction)
- Strong PVC Grit Carrying Web (conformable grades utilize aluminium web)
- Pressure Sensitive Acrylic Adhesive protected by release liner
- Low Thickness of less than 1 mm (coarse grades thicker)
- Available in rolls, individual strips and custom die cut shapes

Properties:

- Exceptional slip-prevention rated to R13 according to ASR A1.5/1,2 (except type Easy Clean R10)
- Quick, simple and easy to apply
- No specialist knowledge required
- Strong, long life adhesive keeping the product in place
- Usable on nearly all properly prepared surfaces (clean, dry, smooth)
- Priming of concrete, cement and wood surfaces is recommended
- Durable, highly wear and tear resistant (approx. 1 million crossings)
- Forklift traffic resistant (except type Easy Clean R10)
- Resistant to most chemicals (except type Easy Clean R10)
- Mineral oil resistant (except type Easy Clean R10)
- UV-stable (except type Easy Clean R10)
- Easy cleaning
- Wide useful temperature range of -40 up to +80 °C (depends on grade selected)
- Installation temperature from +12°C upwards
- Installation requirements – substrate must be clean, dry and free from oils and dust
- Can be walked on immediately after installation
- Load bearing after 6 – 8 hours
- Maximum adhesion after 72 h (depending on temperature and humidity)

Applications:

- Prevention of slipping accidents and the resulting costs
- Rectifies smooth, wet substrates or substrates smeared with oil or grease (proper substrate preparation required)
- For interior and exterior areas (depending on type)
- For low, medium or high traffic (depending on type)
- Entrances, passages, paths
- Steps, slopes, ramps
- Machines, vehicles
- Kitchen and canteens
- Terraces, shelters

Features & Benefits.

Proven Consistent High Quality

Affordable Solution

Rapid remediation of hazardous areas.



60-grit
Aluminium
Oxide

General Purpose

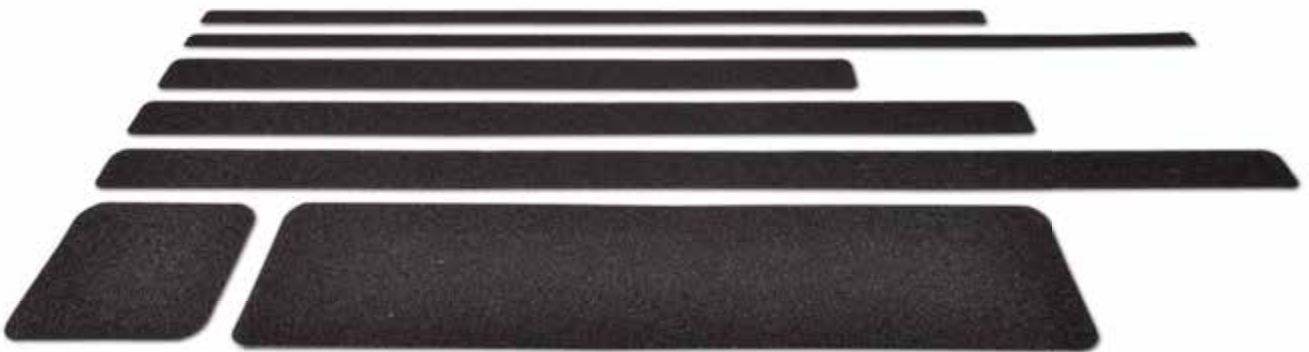
The most common solution for almost any substrate.

- Interior and exterior areas
- For medium to high traffic
- Temperature range of -40 to +80°C

NEW
also available
in white



6



**Available in different width rolls,
pre-cut strips or custom die cuts.**

Ideal for slip resistant floor marking
in workshops, production rooms and
warehouses.

Signal Colours

Especially suitable for use as floor marking with hazard warning effect in mostly clean environments.

- High Visibility, slip resistant floor marking
- For indoor areas
- For low and medium traffic
- Fluorescent colours



Hazard Warning Tapes

Marking of hazardous areas and slip-proofing using a single product.

- Warning of permanent, temporary or specially hazardous areas
- For indoor and outdoor use
- For medium to high traffic
- Temperature range of -40 to +80°C
- Solid product (not laminated)
- Warning colour black/yellow striped for permanent dangers
- Warning colours red/white striped for temporary dangers
- Warning texts for special dangers
- High clarity of print



Texts:
Slippery Floor
Trip Hazard
Beware Step
Beware Ramp
Caution



Multifunctional Tapes

Marking of hazardous areas
by integrated warning strips

- For indoor and outdoor use
- For medium to high traffic
- Temperature range of -20 to +60°C



Yellow
warning strip

Reflecting
warning strip

Luminescent
warning strip

Black/yellow
striped and luminescent
warning strip

Reflecting and
luminescent
warning strip



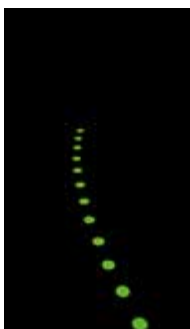
sheets:
150 x 610 mm

Floor Signs

- For indicating the walking directions
- Luminescent also suitable for indicating emergency exit
- For interior and exterior areas
- For medium to high traffic
- Temperature range of -20 to +60°C

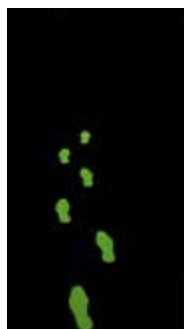
Circles

With 50 mm, 70 mm and
90 mm diameter



Shoe prints

95 x 265 mm



Arrows

130 x 280 mm



Floor Markings

Large floor marking symbols with clear durable adherent printed image and anti-slip surface!

- For indoor and outdoor areas
- For medium to high traffic
- Temperature range of -40 to +80°C
- Durable printing of diverse safety symbols
- Extra strong acrylic adhesive layer
- Standard and Photo-luminescent versions available
- Custom signs available on request (different size or message)

Warning signs

(Triangle with 600 mm leg length)



Beware of Forklifts



Beware of Stairs



Beware of Slippery Floor

Prohibition- and Safety signs

(circle with 400 mm diameter)



No Pedestrian



No Smoking



No Forklifts



No Unauthorized



For Pedestrians



Hearing Protection

Clean substrate, peel back backing film,
Strongly press-on with a roller (see accessories)



Luminescent types (all motifs)
with a luminance of 175% above DIN 67510





luminescent
luminescent/black striped

Glow in Dark

Marking of hazardous areas (day or night)

For indoor areas

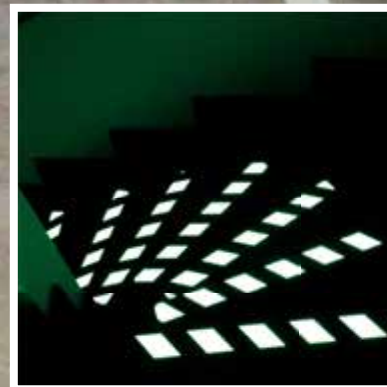
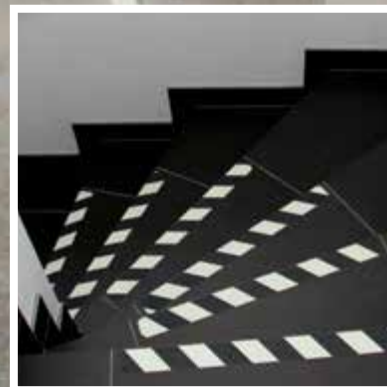
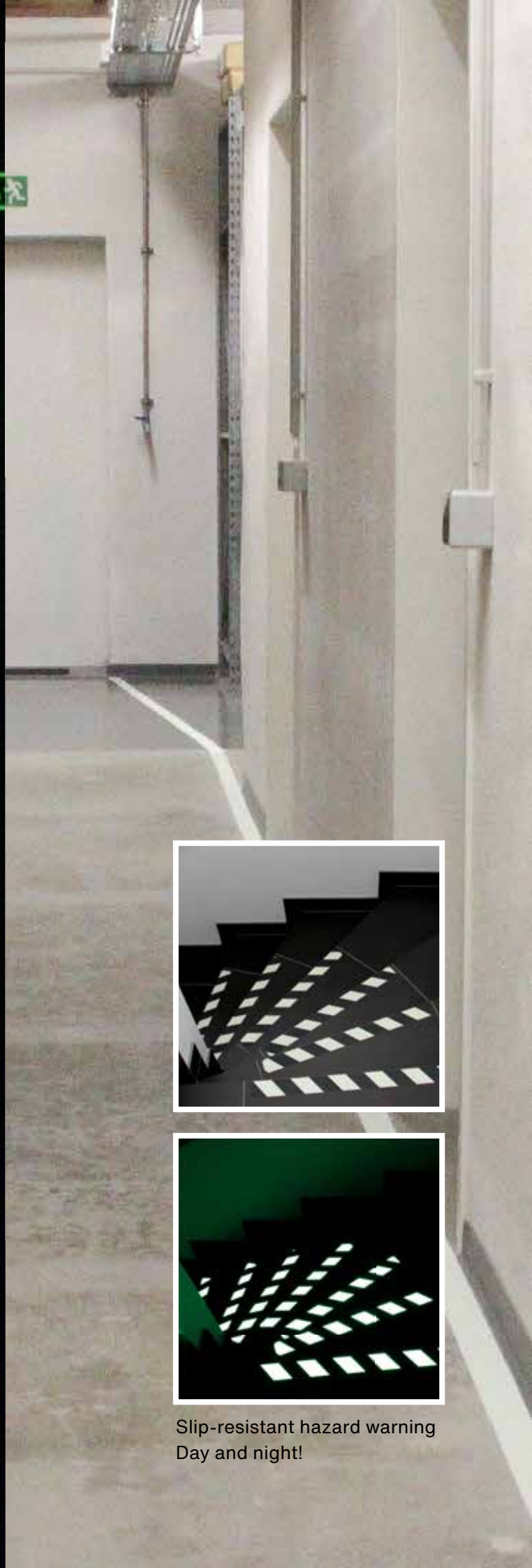
- For medium to high traffic
Long life Photo-luminescent PVC grit carrier substrate
- Solid product (not laminated)
- 150 mcd/m² after 10 minutes,
22 mcd/m² after 60 minutes
- Fading time 35 hours
- Clear visual surface
- Luminescent/black striped with
additional warning indication function
- Luminescent/black with printed warning
text for special dangers

10



Texts

Slippery Floor
Trip Hazard
Beware Step
Beware Ramp
Caution



Slip-resistant hazard warning
Day and night!



R13
60-grit
Aluminium
Oxide

R10
Embossed
vinyl

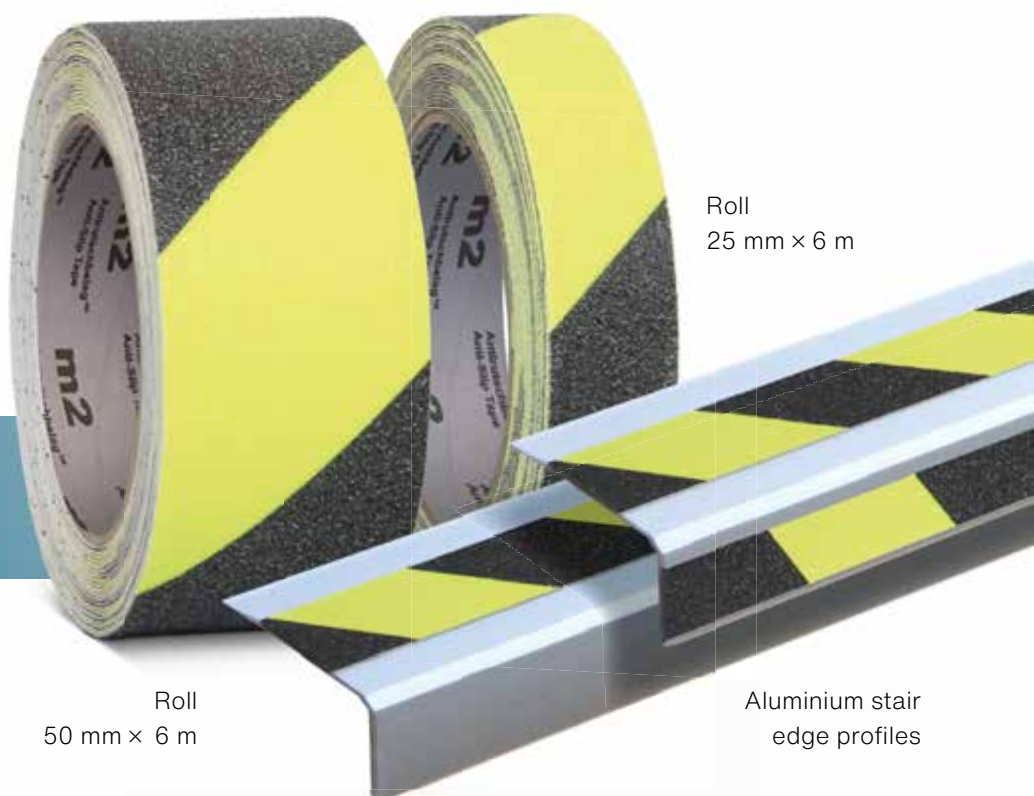
11

Daylight Fluorescent

Highly visible identification of dangerous areas, with or without light.

- Exceptional slip-prevention (R13 General Purpose) according to ASR A1.5/1,2
- Very easy to clean, even with textiles (R10 Easy Clean)
- Clear visual surface
- 150 mcd/m² after 10 minutes, 22 mcd/m² after 60 minutes
- Fading time approx. 35 hours

Available in rolls, pre-cut strips and Aluminium stair edge profiles.



Roll
50 mm x 6 m

Roll
25 mm x 6 m

Aluminium stair
edge profiles



GlitterGrip

Eye-catching and highly visible identification of dangerous areas.

- Exceptional slip-prevention rated to R13 (ASR A1.5/1,2)
- Thickness: < 1 mm (without release liner)
- Resistant to dirt thanks to silicone carbide grit
- Reflective surface
- Quick, simple and easy to apply
- Strong, long life adhesive
- Durable, highly wear and tear resistant (approx. 1 million crossings)
- Available in black, transparent, gold
- UV-stable
- Temperature range: -40 to +80°C

- Eye-catching slip-prevention
- Indoors and outdoors
- For high traffic
- Entrances, passages, paths
- Stairs, slopes, ramps



Also available as Aluminium stair edge profiles

46-grit
Silicone-carbide

Available in rolls and pre-cut strips

Public 46

Ideal for high traffic public areas as e.g. shopping centres, stadiums, sport halls, multi-storey car parks and train stations.

- Maintains an excellent long term appearance (Multi-coloured grain particles)
- Long lasting hazard warning effect
- For indoor and outdoor areas
- For high traffic
- Temperature range of -40 to +80°C



46-grit
Aluminium Oxide



Conformable

The ductile aluminium carrier foil molds itself exceptionally well to irregular substrates such as chequer plates. Optimal installation is achieved by using a rubber mallet or a press-on roller.

- Especially suitable for uneven, rough or profiled areas
- Grooved, tear drop and corrugated sheets
- Brick floors
- Highly textured tiles
- For indoor and outdoor areas
- For medium to high traffic
- Temperature range of -40 to +80°C



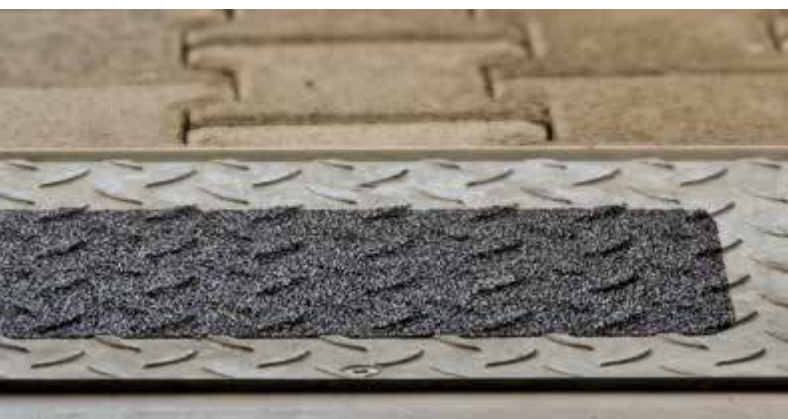
Coarse Grade

- Thickness < 2 mm (without release liner)
- Displacement volume V6 (ASR A1.5/1,2)
- Ideal for areas subject to high contamination
- For indoor and outdoor areas
- For high traffic areas
- Temperature range of -40 to +80°C

13

Coarse Conformable

- Ductile Aluminium backing material
- Thickness < 1.5 mm (without Release liner) Temperature range of -40 to +80°C
- Especially suitable at high accumulation of dirt and/or high traffic
- Uneven, rough or profiled surfaces for high traffic and dirtier environments



Our highest quality self-adhesive anti-slip covers with the widest spectrum of application!

- Grooved, tear drop and corrugated sheets
- Brick floors
- Highly profiled tiles
- For indoor and outdoor areas
- High traffic
- Also for bending around edges of all types
- Workshop floors, production areas and agriculture

Easy Clean R10

Highly suitable solution for wet zones and high quality surface floors that might become scratched by grit, indoor use only.

- Anti-slip surface achieved from embossed vinyl
- Good slip-prevention R10 (ASR A1.5/1,2)
- For indoor areas
- Resists soiling, easy to clean with soap and water
- Bare foot zones
- Residential, sports
- Highly flexible, suitable for bending around edges

14



Monochrome

black/yellow

Daylight Fluorescent



**Suitable for
cleaning with a
soft cloth.**

Sheets



Glow in Dark and
Glow in Dark Hazard

- No scratching of high quality floors
- Warning of permanent, temporary or specially hazardous areas (Easy Clean R10 Hazard Warning)
- Highly visible identification of dangerous areas, with or without light (Glow in Dark, Daylight Fluorescent)
- Hazard Warning: black/yellow, Daylight Fluorescent, Glow in Dark, Glow in Dark Hazard
- Monochrome: black, white, transparent, yellow, grey, blue, red, green
- Available in rolls, individual strips and custom die cut shapes



Product Selection Guide of Anti-Slip Tapes

How to find the right anti-slip tape for your application?

Type of Anti-slip Tape	Smooth barefoot zone & high surface quality floor	Smooth & even dry area	Smooth & even wet area	Wet or dry rise	Rough surface: concrete, brick and tile floor	Grooved, tear drop and corrugated sheet	High traffic area	High contamination area
General Purpose	Caution	Excellent	Good	Good	Caution	Unsuitable	Caution	Caution
Hazard Warning	Caution	Excellent	Good	Good	Caution	Unsuitable	Caution	Caution
Glow in Dark	Caution	Excellent	Good	Good	Caution	Unsuitable	Caution	Caution
Conformable	Caution	Excellent	Good	Good	Excellent	Excellent	Caution	Caution
Easy Clean R10	Excellent	Excellent	Good	Caution	Caution	Unsuitable	Unsuitable	Unsuitable
Public 46	Caution	Excellent	Excellent	Excellent	Caution	Unsuitable	Good	Caution
Coarse Grade	Unsuitable	Excellent	Excellent	Excellent	Caution	Unsuitable	Excellent	Excellent
Coarse Conformable	Unsuitable	Excellent	Excellent	Excellent	Excellent	Excellent	Excellent	Excellent
Signal Color	Caution	Excellent	Good	Good	Caution	Unsuitable	Caution	Caution
GlitterGrip	Caution	Excellent	Excellent	Excellent	Caution	Unsuitable	Good	Caution
Applications and Examples	Bathub Shower, locker room, boats, yacht, parquet floor	entrance, stair, kitchen, terrace (if dry)	entrance, stair, kitchen, terrace (if wet)	ramp, stair, walkway, runway	rough & grained substrate	metal with molded surface	public building, shopping mall, train station, stadium	factory floor, production area, farming, passenger traffic

Anti-Slip Profiles

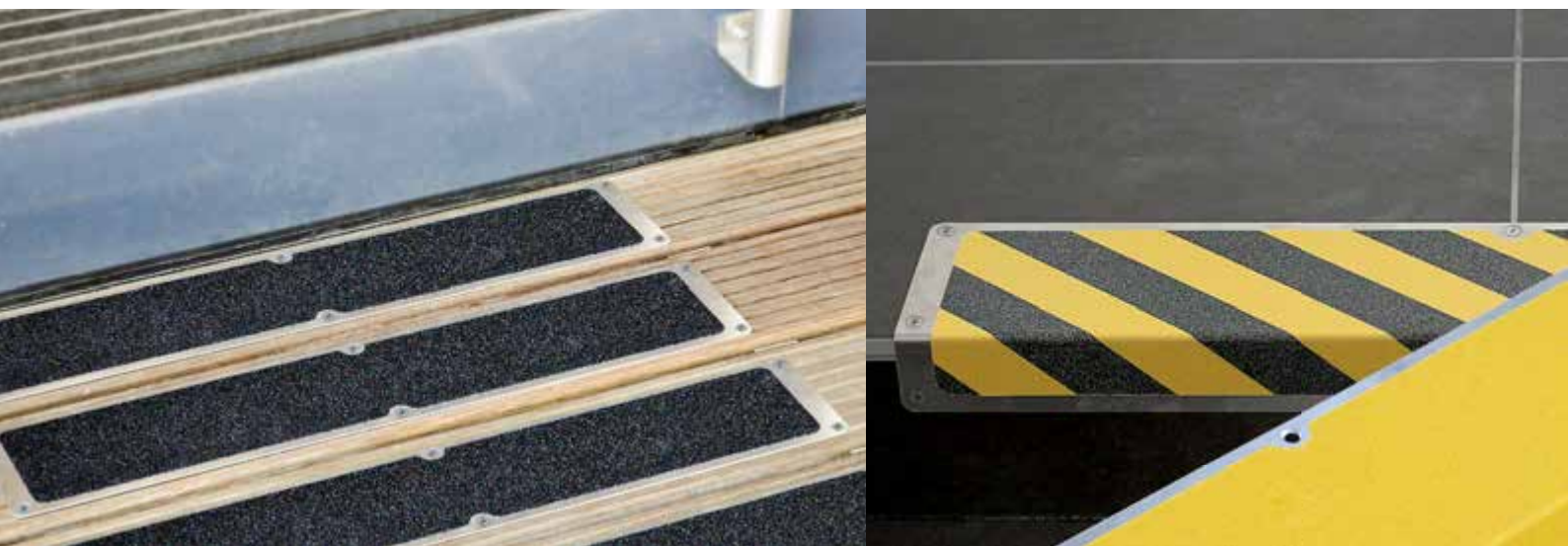
Plates and Edge Profiles – Aluminium

Especially for difficult substrates (e.g. wood, grid iron, carpet) and for reconstructing damaged concrete- or wood surfaces.



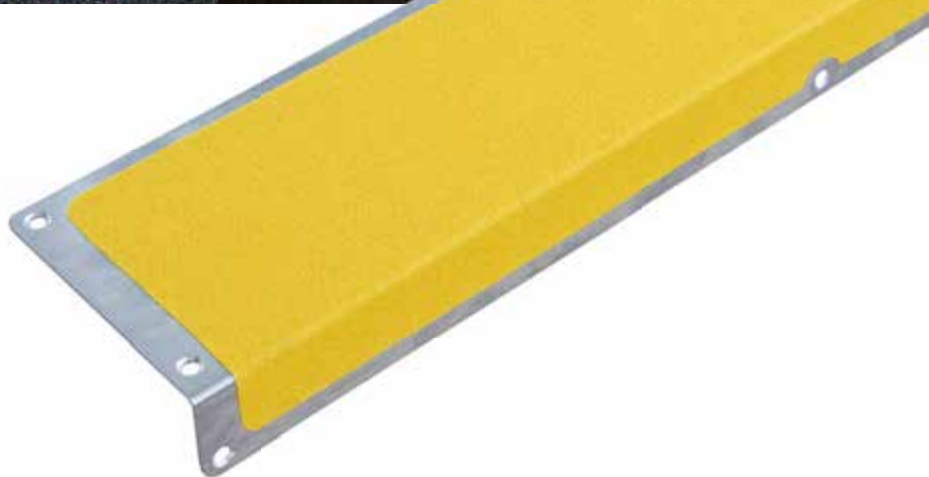
- 1.5 mm flat Aluminium plate / Aluminium edge profile
- Anti-slip surface depending on type used (all types from pages 6 - 15 are possible)
- Pre-drilled mounting holes
- Plate formats 114 x 635 mm (weight approx. 350 g) and 114 x 1000 mm (weight approx. 550 g)
- Edge profile formats 120 x 635 x 45 mm (weight approx. 500 g) and 120 x 1000 x 45 mm (weight approx. 800 g)
- Corrosion resistant
- Easy to clean
- Instantly ready to use
- Anti-slip surface cost-effective to change (e.g. when worn)
- See properties of the different tape types that can be applied (page 5 - 15 of this catalog)
- Wide temperature range of - 40 to + 80°C (depending on type)

16



FEATURES AND BENEFITS

Easy Fix solution for any substrate.
Can be installed in any weather conditions.
Only 1.5 mm thick.





Stair Edge Profiles – Aluminium Screwable

High quality & attractive design, permanently mounted.

- Anti-slip insert depending on type of anti slip tape used (all types of pages 6 - 15 are possible)
- Pre-drilled mounting holes
- Visually attractive (anti-slip insert covers the mounting holes)
- Thickness 3 mm
- Dimensions 53 mm wide, 31 mm lip
- Standard length 610, 800 and 1000 mm
- Custom lengths up to 1450 mm



17



Self-adhesive

Removes residue-free.

- Eye-catching slip-prevention
- On slippery surfaces, for internal areas
- Stairs, platforms, steps, landings

Additional hazard striped band on the front edge for greater visibility.





Anti-Slip Profiles GRP Plates and Edge Profiles

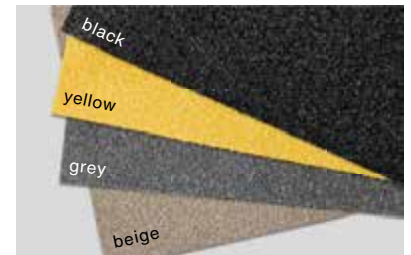
Extremely durable, low cost, easy fix solution for any substrate.
Can be installed in any weather conditions.

- Fibre glass profile made from glass fibre reinforced plastic (GRP)
- Aluminium-Oxide Grit anti-slip surface
- Composite material Iso-Polyester-Resin
- Exceptional slip prevention R13 (ASR A1.5/1,2)
- For mounting (simply drill individual holes)
- Or for gluing (with special adhesive from our accessory range)
- No specialist knowledge needed
- Usable on any substrate
- Robust and hard material with low surface weight
- Extremely high wear resistance (approx. 5 million crossings)
- UV-stable
- Corrosion resistant
- Non-conducting
- Flame retardant
- Wide temperature range of - 20 to + 120°C
- Instantly ready to use
- Ideal for reconstructing damaged concrete- or wood surfaces
- Prevention of slipping accidents and resulting follow-up costs
- On smooth, cold, wet, damp, oily or greasy substrates
- For interior and exterior areas

Plates, Size 750 x 1000 mm



For medium traffic:
Type Medium with medium
46-grit grain, 3,8 mm thick.



For extreme wear:
Type Heavy Duty with very large
12-grit grain, 4,2 mm thick.



Special protection of edges of
stairs, podiums, individual steps,
platforms.

- Dimensions: 230 mm depth, 30 mm chamfer (87 degree)
- Standard lengths 600, 800 and 1000 mm
- Individual lengths up to 2500 mm
- Types Medium or Heavy Duty
- Black, yellow or black with yellow edge



All GRP products can be cut with a
diamond saw blade.



Stair Edge Profiles

Ideal for reconstructing damaged concrete, stone or wood edges.

- Dimensions: 70 mm depth, 30 mm chamfer (87 degree)
- Standard lengths: 600, 800 and 1000 mm
- Individual lengths up to 2500 mm
- Types Medium or Heavy Duty
- Black or yellow

19

Heavy Duty, black



12-grit
Aluminium
Oxide

Medium, yellow



46-grit
Aluminium
Oxide

Mats

m2 Anti-Slip Mat

Both sides slip-proof special rubber mat, portable and no accumulation of fluids on the mat.

- Prevention of slipping accidents and therefrom resulting costs
- On smooth, wet floors or floors smeared with oil or grease
- For medium to high traffic
- In production areas, food processing
- Drinks filling stations, kitchens and canteens
- In front of machines, tables, packaging stations
- Exceptional slip prevention R13 (ASR A1.5/1,2)
- Anti-fatigue
- Temperature insulating
- Sound proofing
- Usable on nearly all substrates
- Very high wear resistance
- Largely chemical resistant
- Easy cleaning
- Mineral oil resistant
- UV-stable
- Very wide temperature range of - 40 to + 100°C
- Outside edge chamfered stumbling protection edge
- Weight 10 kg
- Thickness 7 mm

60-grit
Aluminium
Oxide



rear
sided
profile,
drainage slots



Additional warning function by yellow or black/yellow hatched longitudinal edges

m2 Anti-Fatigue Mat

- Foam-backed PVC-mats
- Structured & slip-preventing surface
- Chequer plate pattern or ribbed pattern surface
- Rear side slip-preventing
- Outside edge chamfered stumbling protection edge
- Thickness 14 mm
- Size 60 x 90 cm and 90 x 150 cm
- Colour black
- Longitudinal edges black, yellow or black/yellow hatched
- Anti-fatigue
- Thermally insulating
- Sound proofing
- Usable on all substrates
- High wear resistance
- Largely chemical resistant
- Easy to clean
- Workplaces of all types
- Suitable for standing activities
- In front of machines, tables, packing stations
- Kitchens, canteens

NEW

m2 Easy Lock and Tough

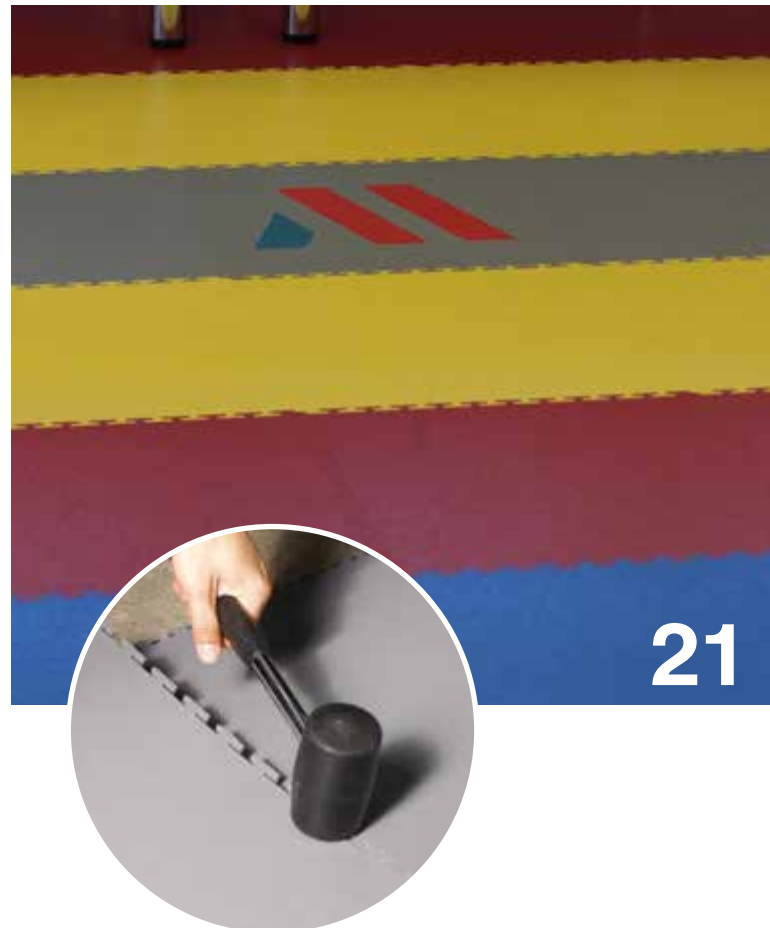
Easy-to-install and versatile PVC floor covering with anti-slip properties.

- Permanent or temporary floor covering made of PVC tiles
- Quick, simple and easy to apply, no specialist knowledge required
- No extensive preparation of the surface required
- Application without any interruption of work
- Robust and instantly ready to use
- Enables colour demarcation of different areas
- Easy to clean
- Soundproofing
- Temperature insulating
- Anti-fatigue
- Slip resistance R9 (ASR A1.5/1,2)
- Largely chemical resistant
- Very high wear resistance
- Forklift traffic resistant
- Usable on every surface
- Factory buildings and production halls
- Stockrooms and warehouses
- Workshops and garages
- Fitness rooms
- Fair and exhibition halls
- Shops and salesrooms

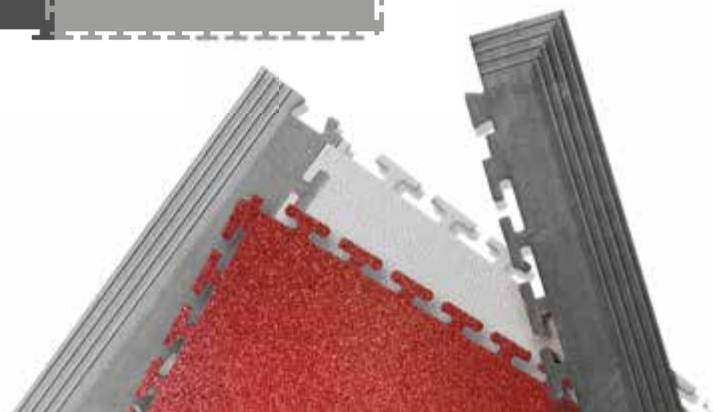
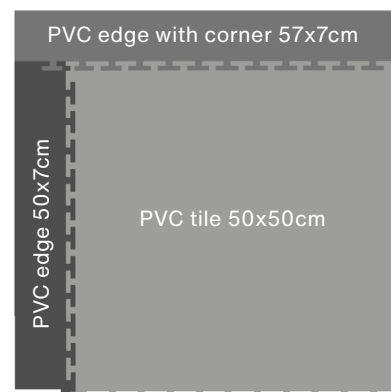


Colours

grey, dark-grey, blue,
yellow, red, black



Dimensions: Thickness 5mm



Floor Marking Tapes

For organisation and safety
in the company.

Standard

- PVC film
- Self-adhesive reverse side without backing film
- Thickness: 0.15 mm
- Available in rolls 50 mm and 75 mm wide, 33 m long
- Colours: blue, yellow, green, orange, red, black, white, black/yellow striped, red/white striped
- Bold colours
- Fast, simple and clean installation
- Convenient and accurate installation with a tape applicator
- No specialist knowledge required
- Priming on concrete, wood and asphalt floors recommended
- Easy to clean
- Can be walked on immediately
- For indoor areas
- For light traffic
- For marking, securing, guiding, demarcating and blocking

Laminated

Tear-resistant, heavy duty and
can be driven over by forklift.

- Thickness: 0.19 mm
- Available in rolls 50 mm and 75 mm wide, 33 m long
- Colours: black/yellow striped, red/white striped
- Bold floor marking with warning effect
- For light to medium traffic
- For enhanced safety in your business

NEW

Now also available colours:
blue, yellow, green, red
and white

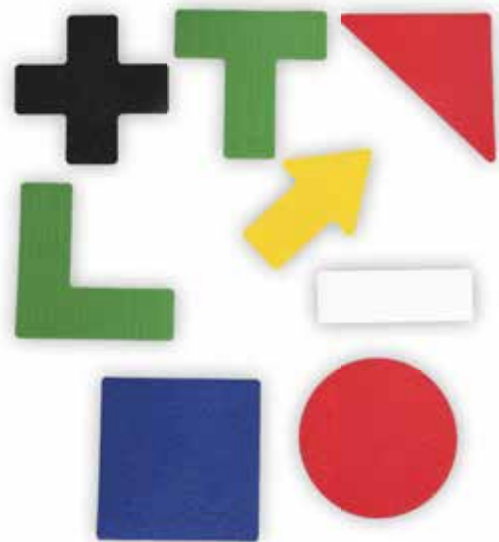




Floor Marking Safety

Heavy duty floor marking tape with slip-resistant surface.

- PVC foil with embossed slip-resistant surface
- Self-adhesive backing with removable release liner to protect the adhesive
- Acrylic adhesive
- Thickness: 1 mm (without release liner)
- Available in rolls 50 mm and 100 mm wide (both 18.3 m long)
- Also available in various floor marking shapes (see sketch)
- Colours: yellow, blue, green, red, black, white
- Tough and tear-resistant
- Can be driven over by forklift trucks
- Moderate anti-slip properties R10 (ASR A1.5/1,2)
- Fast, simple and clean to install
- Strong, long-life adhesive
- Applicable on almost any surface
- No priming required
- Very easy to clean (even with textiles)
- Wide temperature range: -20 to $+60^{\circ}\text{C}$
- Can be walked on immediately
- Indoors
- For medium to heavy traffic
- To mark warehouse and other storage spaces

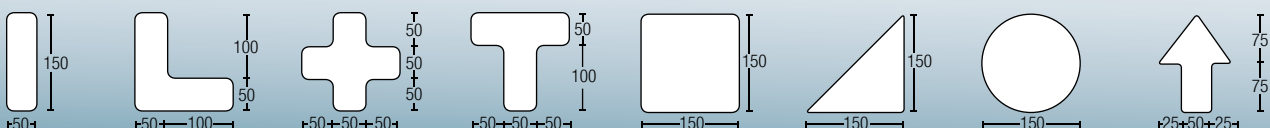


23



For marking, securing, guiding, demarcating and blocking.

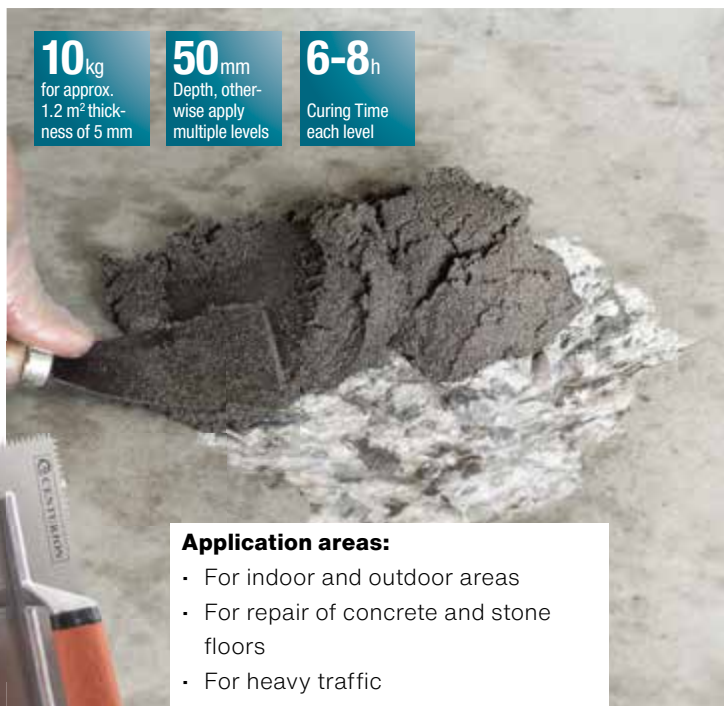
Dimensions



dmd Concrete Repair Set

For Repair of Concrete and Stone Floors in Indoor and Outdoor Areas with Heavy Traffic.

- 5 kg, 10 kg or 25 kg unit
- 2-components: epoxy concrete repair mortar and hardener
- Colour: grey
- Extremely hard and wear resistant
- Durable permanent bond to substrate material starting at a depth of 5mm
- Resistant to most chemicals
- Waterproof
- Dust-free
- Wide temperature range
- Very high load capacity
- Easily shaped
- Priming not necessary
- Installation temperature of +10 °C up to +30 °C
- Installation conditions - substrate must be dry and not in direct sunlight
- Processing time after mixing up to 30 minutes
- Can be walked on after 6-8 hours



10 kg
for approx.
1.2 m² thick-
ness of 5 mm

50 mm
Depth, other-
wise apply
multiple levels

6-8 h
Curing Time
each level

Application areas:

- For indoor and outdoor areas
- For repair of concrete and stone floors
- For heavy traffic
- Holes
- Worn areas
- Defective steps and uneven areas
- Levelling
- Repair of damaged joints and seams

24



25 kg
For approx.
1.2 m² thick-
ness of 15 mm

100 mm
Depth, other-
wise apply
multiple levels

dmd Asphalt Repair Set

For fast repairs of potholes in asphalt/tarmac surfaces.

- 25 kg unit
- Ready mixed bitumen
- Colour: black
- Suitable for wet, cold and hot conditions
- No special preparations, no priming necessary
- Ready to use, no need to add water
- Simply put the mixture in the hole and compact (tamper down)
- For compacting use our tamper (see accessories below)
- Immediately accessible by vehicles
- Extremely durable

Accessories

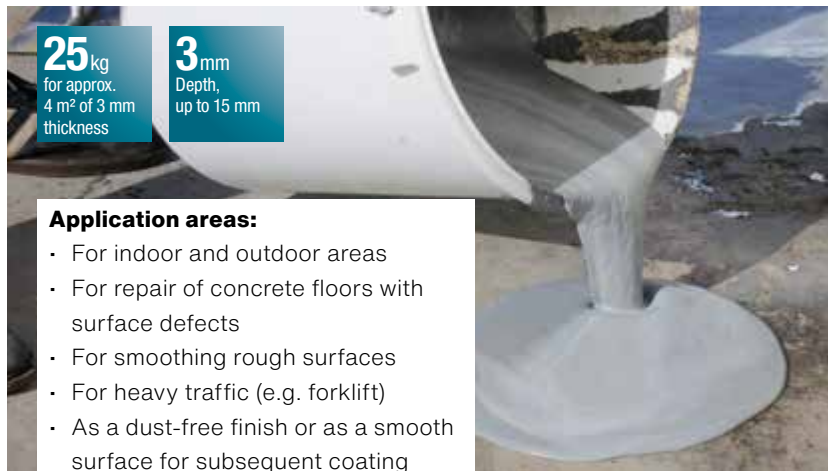
Heavy Duty Tamper

- For compacting
- Ideal for use with Asphalt
- Long, laquered shaft for easy handling
- Weight 4.5 kg, Length 1.37 m



dmd Concrete Surface Repair Set

Simple, fast and cost-effective way to a new, high strength and smooth concrete floor.



- 25 kg unit
- 2-component surface repair mix: consisting of cement and hardener
- Colour: grey
- Self-levelling, easy to coat
- Permanent bond to substrate material starting at a thickness of 3 mm up to 15 mm
- Dust-free
- Polymer modified, therefore twice as firm as usual concrete
- Very high load capacity
- Can be walked on after approximately 6 hours

dmd Patch Repair Set

Super-fast repair of holes up to 100 mm deep in floors with heavy traffic.

- 25 kg unit
- 2-component patch/hole repair mix: consisting of cement and hardener
- Colour: grey
- For shallow or deep holes (5 mm up to maximum 100 mm)
- Very quick load resistance
- Self-levelling
- Durable permanent bond to substrate material starting at a thickness of 5 mm
- Dust-free
- Polymer modified, therefore twice as firm as standard concrete
- Priming not necessary
- Can be walked on after approximately 2 h



25

Product Comparison Floor Repair Systems

Which product for which application?

Repairs of	Asphalt Floors	Concrete Surfaces	Concrete Patches	Concrete Floors
Application	Fast repair of potholes in asphalt/tarmac surfaces	Repair of damaged concrete surfaces in heavy duty areas and for smoothing of rough surfaces	Fast repair of flat and deep holes in concrete floors with heavy traffic	Repair of concrete and stone floors in heavy duty areas, of defective steps and of damaged gaps
Recommended product	Asphalt Repair Set	Concrete Surface Repair Set	Patch Repair Set	Concrete Repair Set
Indoor and outdoor areas	yes	yes	yes	yes
Number of components	1	3	1	2
Components	Ready mixed bitumen	Cement powder, hardener and primer	Ready mixed cement powder	Epoxy concrete repair mortar and hardener
Consistency	tough	liquid	liquid	tough
Colour	black	grey	grey	grey
Processing time	15 min	30 min	5-10 min	30 min
Depth repair	100 mm each layer	3 mm up to max. 15 mm	5 mm up to max. 100 mm	50 mm each layer
To be walked on	immediately	6 h	2 h	6-8 h
Curing time	60% after 24 h	24-36 h	2 h	6-8 h
Installation temperature	in wet, frost and heat	+5 up to +30°C	+5 up to +30°C	+10 up to +30°C
Service temperature	-20 up to +60°C	-20 up to +60°C	-20 up to +60°C	-20 up to +60°C
Coverage	1 m² at 15 mm thickness	4 m² at 3 mm thickness	2,5 m² at 5 mm thickness	1,2 m² at 5 mm thickness (10 kg unit)
Container consumption	bikr	not divisble	divisible	not divisble

dmd Epoxy Floor Coatings

A new and clean floor, made easy.

Medium Traffic

- 5 kg unit
- Consisting of epoxy resin and hardener
- Water-based (solvent-free)
- Colours: grey and light grey
- Very easy to use, no specialist knowledge required
- Self-levelling after application with a paint roller
- Excellent adhesion on concrete, stone and wood floors
- Can even be applied on already coated substrates (multiple coating possible)
- Odour-free
- Resistant to oils, fuels and lubricants, solvents and cleaning agents
- Resistant to chemicals dilute acids, bases, salt and sugar
- Resistant to most bacteria
- Can be applied on to fresh concrete after 7 days
- Priming necessary
- Can be walked on and re-coated after approximately 12 hours

5 kg
for approx.
30-40 m²
Medium Traffic

5 kg
for approx.
15-20 m²
Heavy Duty



light grey

grey

Heavy Duty

- 5 kg unit
- Excellent adhesion on concrete, stone and certain asphalt floors
- Only one coat needed
- Creates an attractive, glossy and smooth surface
- Extremely durable and long lasting
- Suitable for forklifts and heavy goods vehicle traffic
- Can be walked on and re-coated after approximately 12 hours
- Substrate pre-conditioning by polishing and priming recommended
- For open and porous substrates priming necessary
- Fresh concrete must be completely cured

5 kg
for approx.
15-20 m²
2 Part

5 kg
for approx.
15-20 m²
2 Part + Grit

R10
Slip resistance,
2 Part

up to R13
Slip resistance,
2 Part + Grit

light grey

grey

dmd Anti-Slip Epoxy Floor Coatings

Perfect Anti-Slip Epoxy Floor Coatings for all kinds of traffic.

2 Part (Grit Ready Mixed)

- 5 kg unit
- 2-component epoxy floor coat system
- Consisting of epoxy floor coat with aggregate and hardener
- Water-based (solvent-free)
- Thick anti-slip coating
- Colours: grey and light grey
- Slip resistant surface R10 (ASR A1.5/1,2)
- Durable and long lasting
- Easy to clean

2 Part + Grit

- 5 kg unit
- 3-component epoxy resin system
- Consisting of epoxy resin and hardener with additional aluminium oxide grit
- Aluminium oxide grit – fine, medium and coarse
- Simple application with a paint roller
- Followed by addition of aluminium oxide grit of your choice
- Slip resistant surface, R11 up to R13 (ASR A1.5/1,2) depending on the grit (fine, medium, coarse)
- High abrasion resistance
- Grit spreader see accessories

dmd Exterior Anti-Slip Floor Coat

Exterior Anti-Slip Floor Coat for light to medium traffic in commercial and industrial units of all kinds.

- 34 L unit
- 2-component system
- Polymer-cement-based with aluminium oxide and hardener
- Solvent-free
- Colour: grey
- Very easy to use, no specialist knowledge required
- Simple application with a paint roller or a trowel
- Excellent adhesion on almost all floors inside and outside
- Can even be applied on already coated substrates (multiple coating possible)
- Laying conditions: swept clean and fat-free
- No primer required
- May also be applied on slightly moist surfaces
- Single up to triple coating depending on intensity of use
- Flexible (movement of the substrate absorbed)
- Slip resistant surface, R13 (ASR A1.5/1,2)
- Impenetrable
- UV-stable
- Easy to clean
- Can be walked on and recoated after approximately 6 hours



Application areas:

- For indoor and outdoor areas
- For light to medium traffic in commercial and industrial units of all kinds
- Warehouses without forklift traffic
- Slopes and ramps
- Parking lots
- Outdoor facilities and paths
- Sports fields and playgrounds
- Paving stones

Product Comparison Floor Coatings

Which product for which application?

Floor Coating	Epoxy Medium Traffic	Epoxy Heavy Duty	2 Part Anti-Slip Epoxy	3 Part + Grit Anti-Slip Epoxy	Exterior Anti-Slip
Application areas	Storage rooms without forklift traffic, workshops, showrooms, food industry	Warehouses with forklift traffic, automotive workshops, food industry, garages	Storage rooms without forklift traffic, workshops, food industry	Storage rooms with forklift traffic, workshops, food industry	indoor and outdoor, warehouses without forklift traffic, parking lots, stairs, ramps, tiles, paving stones
Floors	Concrete and stone	Concrete, stone and asphalt	Concrete, stone, wood and asphalt	Concrete, stone, wood and asphalt	almost any surface including metal and glass
Usage degree	light to medium traffic	heavy duty	medium traffic	heavy duty	medium traffic
Number of components	2	2	2	3	2
Components	Epoxy resin and hardener	Epoxy resin and hardener	Epoxy resin with mineral aggregate and hardener	Epoxy resin, hardener and aluminium oxide grit	Polymer-cemented base with mineral aggregate and hardener
Solvent-free	yes	yes	yes	yes	yes
Multi layer	yes	yes	yes	yes	yes
Surface	smooth	smooth	fine grit	fine, medium, coarse grit	coarse grit
Coverage	5 kg for 30-40 m²	5 kg for 15-20 m²	5 kg for 15-20 m²	5 kg for 15-20 m²	34 L for 15-20 m²
Max. processing time	90 min	30 min	30 min	30 min	up to 60 min
To be walked on	12 h	6 h	6 h	6 h	6 h
To be stressed after	24-36 h	24-36 h	24-36 h	24-36 h	12-24 h
Fully cured after	7 days	7 days	7 days	7 days	3-4 days
Installation temperature	+10 up to +30°C	+10 up to +30°C	+10 up to +30°C	+10 up to +30°C	+10 up to +30°C
Service temperature	-20 up to +60°C	-20 up to +60°C	-20 up to +60°C	-20 up to +60°C	-20 up to +60°C
Primer	required	recommended	recommended	recommended	not required
Container consumption	not divisible	not divisible	not divisible	not divisible	not divisible



Anti-Slip Footwear

Safety Footwear with the world's best slip resistance!

Safety shoes are an essential part of personal protective equipment when it comes to avoiding accidents and injuries.

In order to guarantee you even greater safety, we have equipped our safety shoes with a special anti-slip outsole. Thanks to this special grip-outsole, you can move safely on any surface. The profiled sole structure prevents slipping and the special rubber compound of the outsoles increases the steadiness and tread safety.

APPLICATION AREAS

All working areas with slippery up to extremely slippery surfaces that are contaminated with oil, grease, lubricant or moisture.

NEW

YOUR BENEFITS

28



Protection Classes:

Safety Shoes EN ISO 20345

Protection Class	SB	S1	S2	S3	S4	S5
Anti-slip (SRA, SRB or SRC)	-	-	■	■	-	-
Safety toe (impacts up to 200 Joule)	-	-	■	■	-	-
Closed heel area		-	■	■		
Oil and fuel resistance of the sole (FO)	-	-	■	■	-	-
Antistatic properties (A)		-	■	■	-	-
Energy absorption in the heel area (E)		-	■	■	-	-
Water repellency for at least 60min (WRU)			■	■		
Waterproofing					-	-
Puncture resistant (P)				■		-
Profiled sole				■	-	-

Comparative valuation of slip resistance according to EN ISO 20345 vs. HSE

Rating	Coefficient of Friction	Testing surface	Estimated slip risk
★ HSE	0,19 up to 0,26	Ceramic tiles with cleaning agents	1:2 up to 1:200
★★ HSE	0,27 up to 0,35	Ceramic tiles with cleaning agents	1:200 up to 1:500.000
SRA EN ISO 20345	0,32	Ceramic tiles with cleaning agents	1:280.000
★★★★ HSE	≥ 0,36	Ceramic tiles with cleaning agents	1:1.000.000
SRB EN ISO 20345	0,18	Steel plates with glycerol	1:2
★★★★★ HSE	0,19 up to 0,26	Steel plates with glycerol	1:2 up to 1:200
★★★★★★ HSE	0,27 up to 0,35	Steel plates with glycerol	1:500 up to 1:500.000
Comments: The anti-slip class SRC includes both the anti-slip class SRA and the anti-slip class SRB The anti-slip classes 4-star and 5-star include the 3-star anti-slip class Conclusion: The 5-star anti-slip class leads to a maximum slip resistance on all surfaces			

29

Features of our Grip Anti-Slip Footwear:

- ★★★★★ slip resistance according to the test procedure of Health and Safety Executive (HSE)
- Optimal slip resistance due to slip-resistant sole profile with special adhesive rubber compound
- Safety toe made of steel (ST) or a composite material (CT)
- Cushioned insole
- Excellent workmanship
- Sole leaves no marks or rubber residues on the floor

Superb selection
of unisex footwear



6200 George Grip ST

- Full grain leather upper
- Steel toe
- Protection class according to EN ISO 20345: **S2 SRC**
- ★★★★★ Grip rated slip resistance (HSE)
- EUR Sizes: 39-49





Superb selection of **UNISEX** footwear



53700 Foreman Grip CT

- Full grain leather upper
- Composite toe
- Protective midsole
- Protection class according to EN ISO 20345: **S3 SRC**
- ★★★★★ Grip rated slip resistance (HSE)
- EUR Sizes: 36-49



55334 Tillman Grip ST

- Full grain leather upper
- Steel toe
- Protection class according to EN ISO 20345: **S2 SRC**
- ★★★★★ Grip rated slip resistance (HSE)
- EUR Sizes: 36-48



55474 Engineer Grip ST

- Full grain leather upper
- Steel toe
- Protection class according to EN ISO 20345: **S2 SRC**
- ★★★★★ Grip rated slip resistance (HSE)
- EUR Sizes: 36-48





6500 Sprinter Grip ST

- Durable man-made upper
- Dual density EVA mid-sole
- Breathable mesh
- Steel toe
- Protection class according to EN ISO 20345: **S2 SRC**
- ★★★★★★ Grip rated slip resistance (HSE)
- EUR Sizes: 36-48

31



56580 Champion Grip CT

- Full grain leather upper
- Composite toe
- Protective midsole
- Protection class according to EN ISO 20345: **S3 SRC**
- ★★★★★★ Grip rated slip resistance (HSE)
- EUR Sizes: 36-49



56560 Explorer Grip ST

- Full grain leather upper
- Steel toe
- Protection class according to EN ISO 20345: **S2 SRC**
- ★★★★★★ Grip rated slip resistance (HSE)
- EUR Sizes: 36-49



MEHLHOSE®
TRACTION TECHNOLOGIES

Mehlhose Antirutschprodukte GmbH

Gutedelstr. 38-42

79418 Schliengen, Germany

Tel: +49 7635/827 15-0

Fax: +49 7635/827 15-100

E-Mail: info@mehlhose.de

Internet: www.mehlhose.de

