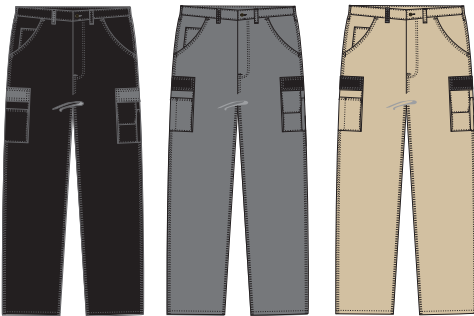


FE LIGHT SERVICE TROUSERS

ENGEL



FE LIGHT SERVICE TROUSERS

2280-740

Smart 2-colour trousers. 2 side pockets, the right one with coin pocket. 2 patch back pockets. 2 spacious thigh pockets with box pleats: the left pocket has phone, pencil and tool pocket, the right one has a tool pocket.

QUALITY: TC Twill 65% polyester / 35% cotton 250 g/m²

COLOUR: 68 Navy Blue/Azure 2025 Black/Grey 2520 Grey/Black 4020Khaki/Black

SIZE: 36 - 68
Short inseam length S23 - S28

WASH:



OEKO-TEX®
CONFIDENCE IN TEXTILES
STANDARD 100
976-15801 011
Tested for harmful substances.
www.oeko-tex.com/standard100